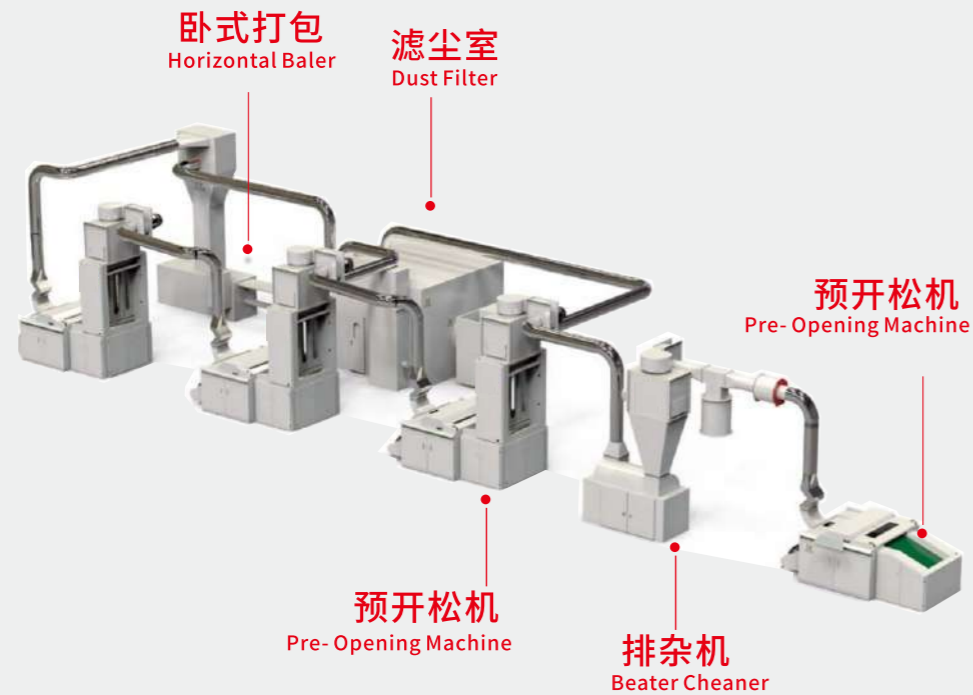




无纺纤维回收生产线

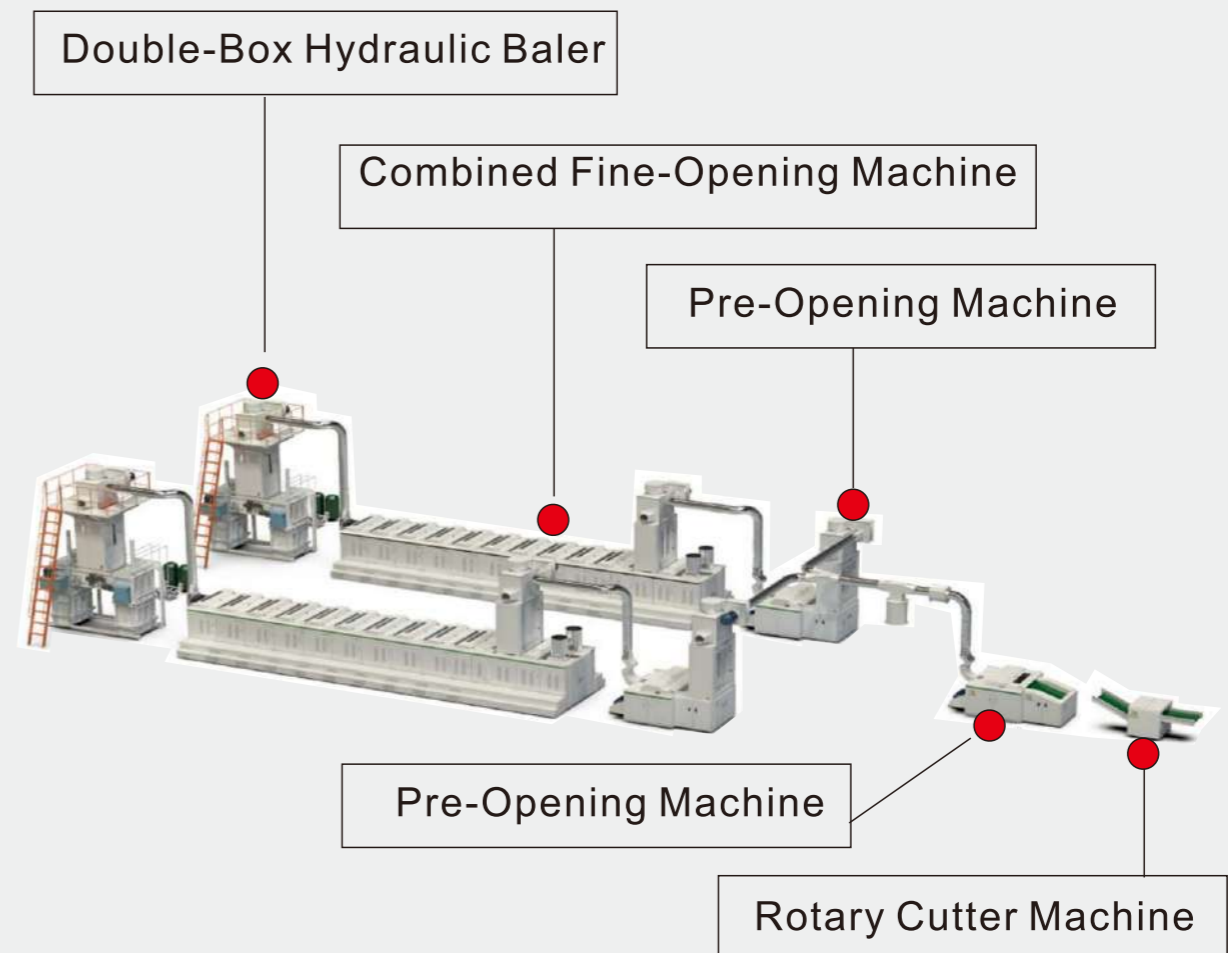


- 该生产线主要加工适用于无纺布加工的再生纤维，其纺织废料可以是旧衣物，汽车内饰边角料，无纺布边角料等。
- 生产线产量400-1000kg/h。
- The line is mainly used for processing non-woven recycled fibers, the textile waste can be used clothes, car interior trim scraps, non-woven scraps and so on.
- The production of line from 300kg/h to 1000kg/h.

Head office: +86-21-33518045 / 33518046
Mobile/WhatsApp No. : +86-189 1736 0098
Mail: shary@vip.163.com
www.shsunking.en.alibaba.com
www.sunking machinery.com
Add: Room 838 No.1877 CaoAn Road,
Jiading District, Shanghai City.



Hard waste & fabric waste recycling line



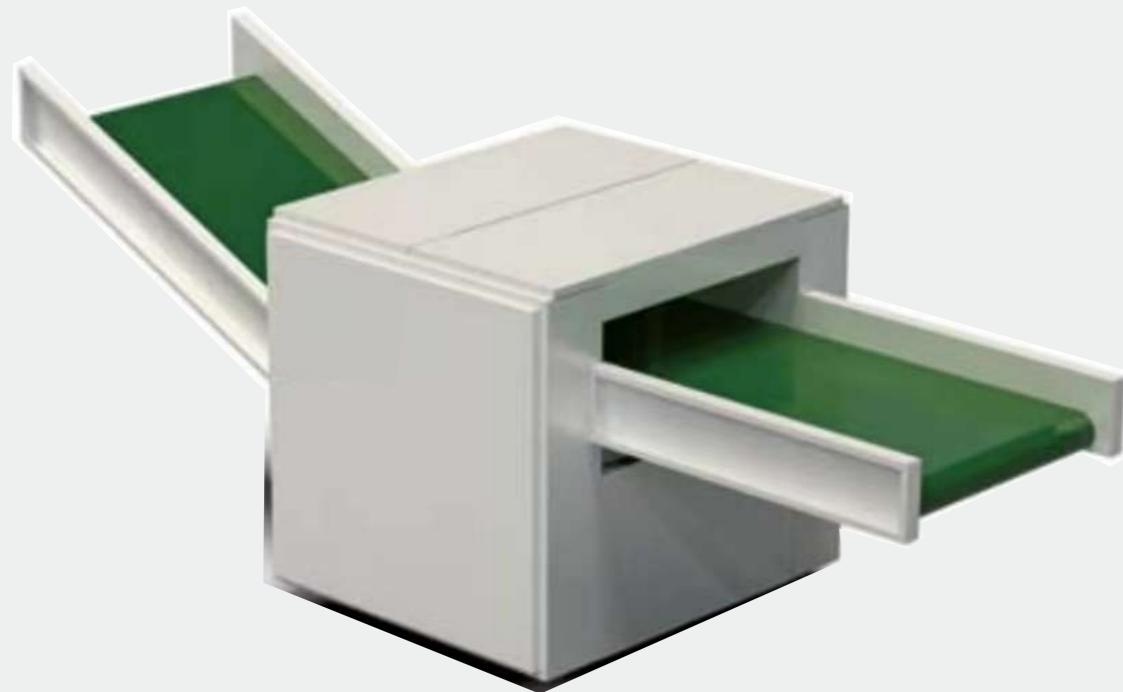
- This line can process a wide range of textile waste. Such as Garment Industry cut offs, short or long fibre thread waste, loom selvedge, pre and post-consumer cloth, etc.
- The line production capacity from 400kg/h to 1000kg/h.
- The line use PLC control system, the unit can be controlled independently. All motors are controlled by frequency conversion, and the speed can be adjusted according to customers' requirements.



SK - RC Cutting Machine

SK - RC 切断机

- 应用：切断机是用于开松之前，对原料进行预处理的一种设备，它可以长条的原料处理成小块，便于后续开松机的加工处理。可提供转刀式切断机、铡刀切断机。适用于切碎各类软纤维、服装下脚料、纺织废纱、回丝、废旧衣服、化纤、玻璃纤维、麻纤维等。
- 特点：维护方便，切断大小长短可任意调整，整机移动方便，机构紧凑，性能稳定。切断机根据使用情况不同，可以配套开松生产线使用，产量可达500-3000kg/h。
- Application :
Cutting machine is a kind of equipment used for pretreatment of raw materials before opening . It can process long strips of raw materials into small pieces , which is convenient for the subsequent processing of opening machine . Rotary cutter and guillotine cutter are available . It is suitable for shredding all kinds of soft fiber , garment waste material , textile waste yarn , recycled silk , waste clothing , chemical fiber , glass fiber , hemp fiber , etc .
- Feature : Convenient maintenance , cutting size and length can be arbitrarily adjusted , the whole machine is convenient to move , compact mechanism , stable performance .
The production capacity from 500 to 3000kg/ h .



SK-RC500切断机 SK-RC500 Cutting Machine

台时产量 Productivity	300-1000kg/h
刀辊直径 Dia . Of Rotary	500mm
工作幅宽 Working Width	350mm
配用功率 Power	5.5kw main power ,1.5kw feeding conveyor
外形尺寸 Outsize	3100*1000*1100mm
整机重量 Weight	约600kg



SK Series Double-Box Hydraulic Baler

SK 6010B系列双箱打包机

- SK 系列双箱打包机是由我司自主研发的新一代液压双箱自动打包机，主要适用于再生棉、落棉等纤维的打包处理。
- 采用双棉箱喂棉，双包箱打包，可以有效提高打包效率。
- 增加液体喷淋装置，可以满足客户对纤维打包时添加辅助溶剂的需求。
- SK series Double-Box Hydraulic Baler is a new generation of hydraulic baler independently developed by our company, which is mainly suitable for the packaging and processing of recycled cotton, falling cotton and other fibers.
- Using double cotton box to feed cotton, double box packaging, can effectively improve the efficiency of packaging.
- The addition of liquid spray device can meet the customer's need to add auxiliary solvent when fiber packaging.



SK 6010B 系列双箱打包机 SK 6010B Series Double-Box Hydraulic Baler

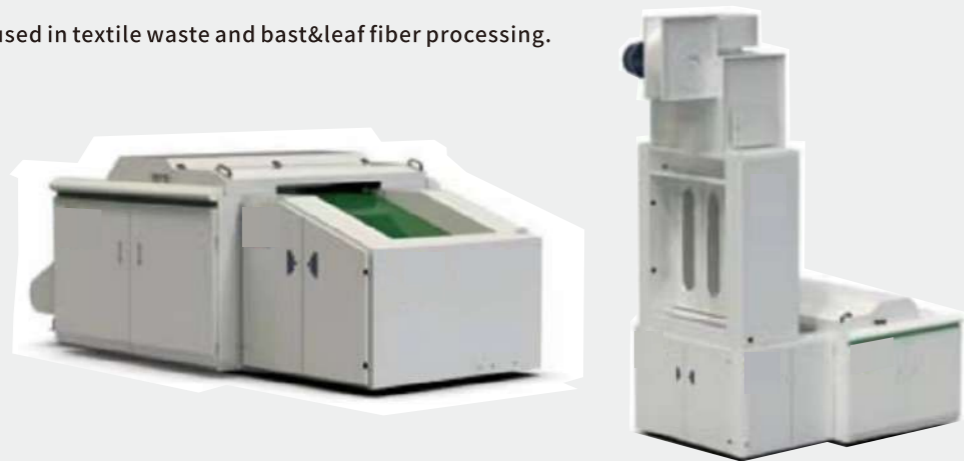
打包尺寸 Bale Size	1000*600*800 mm
打包重量 Bale Weight	120-150kg/bale
打包能力 Productivity	46/h
主电机功率 Main Power	7.5kw
油缸尺寸 Dia.of Oil Cylinder	120mm
外形尺寸 Outsize	3610*2200*4900mm(含凝棉器)
重量 Weight	3500kg



SK Series Pre-Opening Machine

SK 系列预开松

- 应用: 通过高速运转的制辊将纺织废料撕扯成小块或者粗纤维, 在离心力作用下, 可将各种杂质排出, 从而得到初加工后的纤维布块混合物。
- 主要应用于纺织废料及麻纤维的初加工。
- Application: The textile waste is torn into small pieces or coarse fibers by the high speed running barbed roller. Under the action of centrifugal force, various impurities can be discharged, so as to get the fiber cloth mixture after preliminary processing.
- Mainly used in textile waste and bast&leaf fiber processing.



特点:

采用琴键式最料机构, 对原料的适应性强, 不受原材料的状态、材质的影响, 适用于多种原料的顺畅喂入。喷料更加顺畅舒缓, 可减少原料的横截面, 有效保护纤维长度。采用高强度钉板辊及高质量针布辊, 针对不同原料提供专业的加工方案。采用无尘笼出料方式, 降低故障率和易损件频率, 提高生产效率。

Feature:

Using keyboard type feeding device, can be applied in multiple material feeding, it's not affected by the state of raw materials. Feed more smooth, can reduce the cross section of raw material, effectively protect fiber length. Using high strength pegboard type and wire type licker-in to provide professional processing solutions for different raw materials. Using no dust cage exiting unit, high productivity and low failure rate

SK 系列预开松 SK Series Pre-Opening Machine

规格型号	SK 6010Q 预开松机	SK 6013S预开松机	SK 6015S 预开松机	SK 7515 预开松机
Name&Type	SK 6010Q Pre-Opening Machine	SK 6013S Pre-Opening Machine	SK 6015S Pre-Opening Machine	SK 7515S Pre-Opening Machine
喂料方式 Type Of Feeding Roller	琴键式 Keyboard Type	四罗拉 Four feeding Roller	琴键式/ 四罗拉 Keyboard Type/four Feeding Roller	琴键式/ 四罗拉 Keyboard Type/Four Feeding Roller
工作幅宽Working Width	1000mm	1300mm	1500mm	1500mm
时产量Productivity	300-600kg/h	400-500kg/h	800-1000kg/h	800-1000kg/h
滚筒直径Dia.Of Licker-in	600mm	600mm	600mm	750mm
滚筒类型Type Of Licker-in	钉板Pegboard	钉板/针布 Pegboard/Wire	钉板/针布 Pegboard/Wire	钉板/针布 Pegboard/Wire
主电机功率 Main Power	37kw	37kw	45kw	45kw
主电机速 Main Motor Speed	1450rpm/min	1450 rpm/min	1450 rpm/min	1450 rpm/min
主电机变频 Main Motor Inverter Control	是Yes	是Yes	是Yes	是Yes
罗拉变频控制Feeding Roller Inverter Control	是Yes	是Yes	是Yes	是Yes
外形尺寸Outsize	3491*2001*1307mm	3536*2300*1390mm	3716*2340*1307mm	3716*2340*1478mm
重量Weight	约3000kg	约1935kg	约4000kg	约5000kg

SK-1800 Beater Cleaner

SK-1800 排杂机

- 应用: 该设备通过内部的作用辊对原料进行除杂工作, 包括废棉中的叶子、种子等杂质, 也可以处理废旧衣服上的纽扣、拉链等; 除杂率可达70%-80%。杂质通过离心作用力排出并进行收集, 处理后的纤维经由风机进入下道工序进行继续加工。
- 该设备需要与预开松机搭配工作, 才能达到更优质的排杂效果。
- Application: The machine removes impurities from raw materials through the internal big sharp roller including the leaves and seeds in waste cotton, and can also deal with buttons and zippers on waste clothes. The impurity removal rate can reach 70%-80%.The impurities are discharged and collected by centrifugal force, and the treated fiber enters the next process through the fan for further processing.
- The machine needs to work with the pre-opening machine, in order to achieve better clutter removal effect.



SK-1800 排杂机 SK-1800 Beater Cleaner

处理量Processing Capacity	500-700kg/h
工作辊类型Roller Type	双角钉辊筒Double Sharp Roller
排杂效率Removal Rate	20-30%
功率Power	4kw
外形尺寸 Outsize	2200*1060*4190mm
重量Weight	2000kg



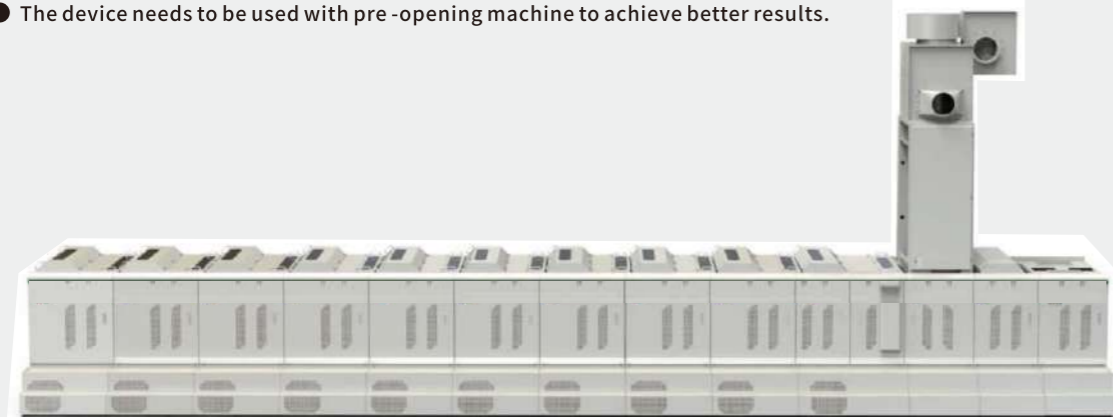
SK Series Fine-Opening Machine

Green cycle, Green Development, supplier of solutions for waste textile recycling

SK 系列精细开松

绿色循环 绿色发展废纺解决方案提供者

- 精细开松生产线由SK 400系列和SK 250系列组成，两种精细开松机搭配，通过不同型号针布刺辊进行多次梳理，从而得到可纺的再生纤维。
- 该设备需搭配预开松使用才能达到更好的效果。
- The Fine-opening production line consists of the SK 400 series and the SK 250 series. These two type machine use different types of wire to carding the materials after pre-opening to get better spinnable recycled fiber.
- The device needs to be used with pre-opening machine to achieve better results.



特点:

采用双吸风式尘笼设计，该设计为我司重要的技术创新，双吸风式尘笼设计取代了传统的单面吸风设计可以使我们得到更平整，顺畅的棉层，得到更优质的纤维。
应用下吸风装置，将传统的单侧外露式管道设计成为了设备的一部分，便于清理，提高了安装效率，降低了维护成本。
采用反向喂棉方式，有效提高纤维均匀度，提高再生棉的可纺率。
增加棉网断网提醒功能，预防由于断网导致的棉网堆积，造成喂料堵塞影响后续工作，有效的提高了工作效率。
挂花监测及自动清理功能。保障纤维质量，提高工作效率。

Feature:

Using double-side air suction structure in dust cage, which is an important technical innovation for our company. This design to replace the traditional single-side suction design, can make us get more flat, even cotton layer, get better quality fiber.
Using down draft suction design, no exposed pipes, which is better to make cleaning work and easy to maintain.
Using backward feeding, it can effectively improve fiber uniformity and spinnability of recycled cotton.
Add cotton layer detecting and breakage warning, which is improve work efficiency and reduce failure rate.
Using material accumulate detection and automatic cleaning function, which can ensure fiber quality and improve work efficiency.

SK 系列精细开松SK Series Fine-Opening Machine

规格型号	SK 40135 精细开松机	SK 4015S 精细开松机	SK 2513D 精细开松机	SK2515D 精细开松机
Name&Type	SK 40135 Fine-Opening	SK 4015S Fine-Opening Machine	SK 2513D Fine-Opening Machine	SK2515D Fine-Opening Machine
喂料方式 Type Of Feeding Roller	四罗拉Four Feeding Roller	四罗拉Four Feeding Roller	单罗拉Single Feeding Roller	单罗拉 Single Feeding Roller
工作幅宽 Working Width	1300mm	1500mm	1500mm	1500mm
时产量Productivity	300-400kg	400-500kg	300-400kg	400-500kg
滚筒直径 Dia Of Licker-in	400mm	400mm	250mm	250mm
滚筒类型 Type Of Licker in	针布Wire	针布 Wire	针布Wire	针布 Wire
主电机功率 Main Power	11kw	11kw	7.5kw	7.5kw
主电机转速 Main Motor Speed	1450rpm/min	1450 rpm/min	1450 rpm/min	1450 rpm/min
主电机变频Main Motor Inverter Control	是Yes	是Yes	是Yes	是 Yes
罗拉变频控制Feeding Roller Inverter Control	是Yes	是Yes	是Yes	是Yes
外形尺寸 Outsize	1350*3469*1782mm	1350*3669*1782mm	1060*3469*1782mm	1060*3669*1782mm
重量Weight	约1500kg	约1800kg	约1200kg	约1500kg

SK Auto Feeding Machine

SK 自动上料机

- 应用:可输送各种等级的捆包纤维，通过输送带将原料喂入，经高速打手开松后通过风机喂入后道工序，此机型适用于纤维类原料的上料。
- Application: It can transport various grades of bundled fibers, feed the materials through the conveyor belt, and feed to the latter process through the fan after opening by the high-speed beater. This model is suitable for the feeding of fiber raw materials.
- 特点:节省人工，方便快捷，结构稳定，易于操作。
- Feature: Laborsaving, convenient and facilitative, stable structure, easy to operate.



SK 自动上料机 SK Auto Feeding Machine

工作幅宽 Working Width	1000mm	输料帘 Transporting curtain	铝合金针帘 Aluminium alloy needle curtain
时产量 Production	500-700kg/h	主电机功率 MainPower	3kw
滚筒直径 Dia.Of Cylinder	400mm	外形尺寸 Outsize	4430*1606*2390mm